



Madeira Grove, Woodford Green, IG8

BUTLER & STAG



Welcome to Chantal Court, this exclusive development comprises ten meticulously crafted luxury apartments, each an epitome of sophistication and style. Nestled within a stone's throw of Woodford's Central Line station, Chantal Court seamlessly blends modern elegance with timeless charm, offering residents an unmatched lifestyle experience.



Leasehold

Price Guide £330,000

Situated just a stone's throw from Woodford Central Line Station, there is something for everyone within this exclusive development with its mixture of spacious, one and two-bedroom apartments.

The interior spaces are defined by LVT flooring, two-toned kitchen units, and veined quartz work surfaces which add visual excitement and depth to the room.

Each apartment enjoys custom-built kitchen cabinetry which embraces a sense of timeless style and functionality, making it an enduring design that fits perfectly for this brand-new building. All kitchens have top-of-the-range Zanussi integrated appliances that provide all the features necessary to accommodate a contemporary lifestyle for the new owner.

The bathrooms exude sophistication and comfort with spa-like retreat qualities where functionality and aesthetics have come together to provide a relaxing place to be. Large format textured grey tiles line both the floor and walls providing hallmark qualities of a modern bathroom. All concealed taps, shower valves, and shower heads are sleek in design and have a chrome finish. Wall-hung toilets and basins are a running theme as are the spacious walk-in showers with glass enclosures that provide a functional space.

All of the apartments within Chantal Court have their own private outdoor space but none more so than plots 2 and 3 which both boast lawned landscaped gardens. This new development offers a popular urban location whilst being surrounded by wide-open green spaces, yet still providing access to central London within a short train or car journey.

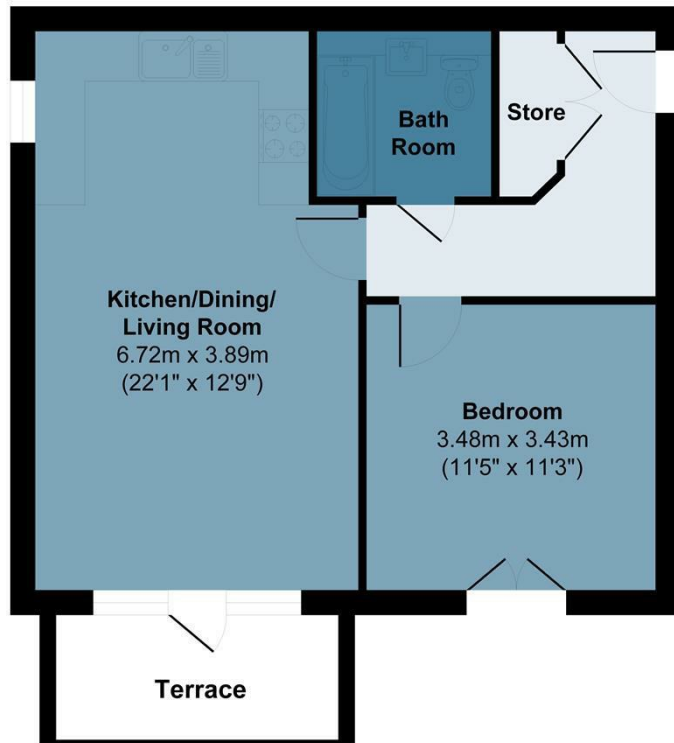
All apartments offer bedrooms large enough for a double bed and plenty of space to spare for wardrobes.



Flat 5 Chantal Court

Approx. Gross Internal Area 51.0 sq M (549 sq Ft)

BUTLER & STAG



First Floor

Measurements are approximate and for illustration purposes only. While we do not doubt the accuracy and completeness, we advise you conduct independent assessment of the property to determine monetary value.
© @ modephoto.uk www.modephoto.co.uk

Prepared on behalf of Butler & Stag
Land and New Homes

If you have any further questions
please don't hesitate to contact us on
the details below

BUTLER & STAG

☎ 020 4542 2999

🏠 12 Coppice Row Theydon Bois, Essex, CM16 7ES

✉ enquires@butlerandstag.com

www.butlerandstag.uk

IMPORTANT NOTICE - These particulars have been prepared in good faith and they are not intended to constitute part of an offer or contract. We have not performed a structural survey on this property and the services, appliances and specific fittings have not been tested. All photographs, measurements, floor plans and distances referred to are given as a guide and should not be relied upon.